

SafetyNet™

COMMUNICATE INNOVATE LOCATE

SafetyNet™ **PROTECT+**



- ◎ Staff Messaging
- ◎ Personal Protection
- ◎ Intelligent Location
- ◎ Movement Detection
- ◎ Man Down & Lone Worker

SafetyNet Protect & Mesh

Protecting your staff

SafetyNet Protect provides the ultimate solution in personal safety of your staff, informing you of their location and wellbeing at all time. In many applications location of staff can save time, increase efficiency and potentially lives where help needs to be dispatched quickly and accurately to a person in need.

Protect+ unit has a 32 character display which informs team members of vital safety and response information for any active alarms. This may be used to ensure areas with an active alarm are not entered or provide response teams with essential information needed to assist the member

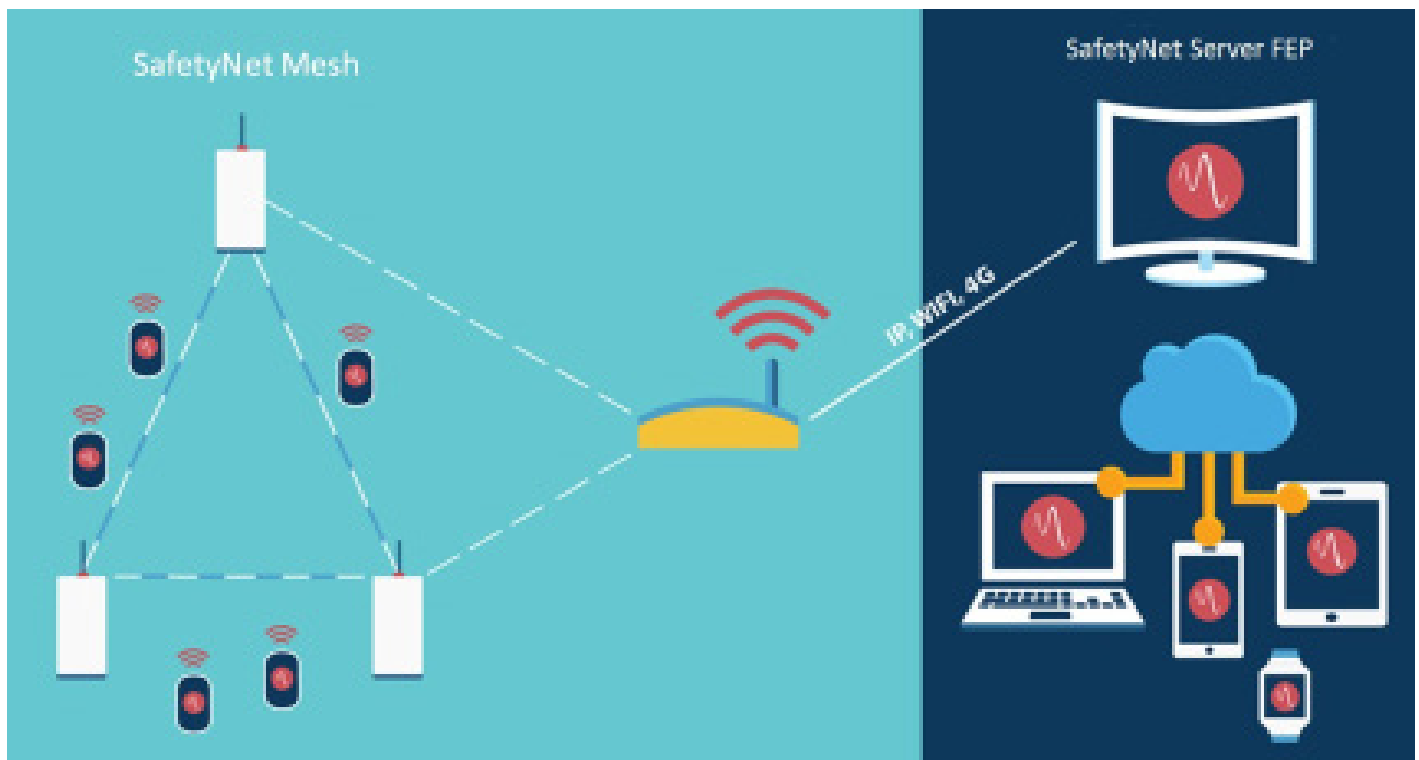


Protect+ Features

- ◉ Simple to operate and use
- ◉ Small, robust and compact, belt worn
- ◉ Location by beacon proximity
- ◉ Personal attack alarm button
- ◉ Person down & no movement detection
- ◉ Wireless charging, 16hr operational life automatic registration/de-registration
- ◉ 32 character display for real time staff information

IoT Mesh Technology

- ◉ Network expands by adding wireless routers
- ◉ Self healing technology
- ◉ Local and precise wireless coverage of sites
- ◉ Independent of any other infrastructure
- ◉ Completely wire-free
- ◉ Self contained and license free



SafetyNet Management Applications

SafetyNet Locator Application

The location of your staff can be viewed in real time using SafetyNet Locator on any PC workstation across the sites' IP network.

Reporting

Reports of user movements and activity at each zone can be generated between any dates and times for movement analysis, guard tour and the recording of incidents.

Web and Application Solutions

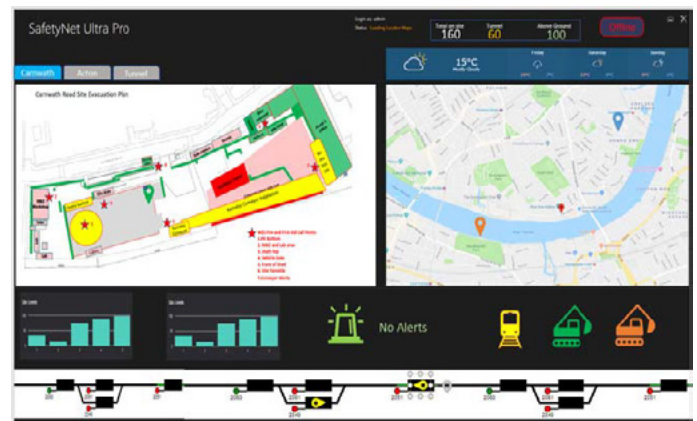
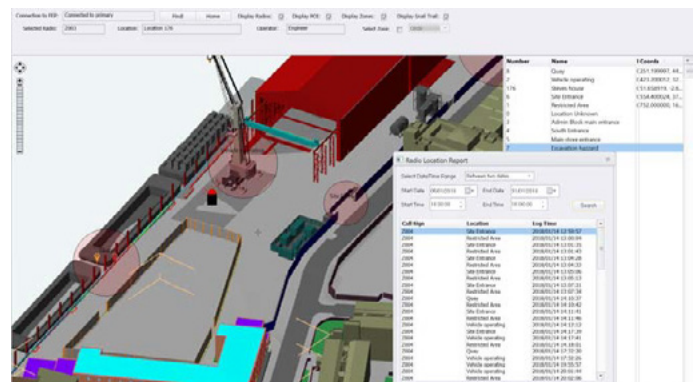
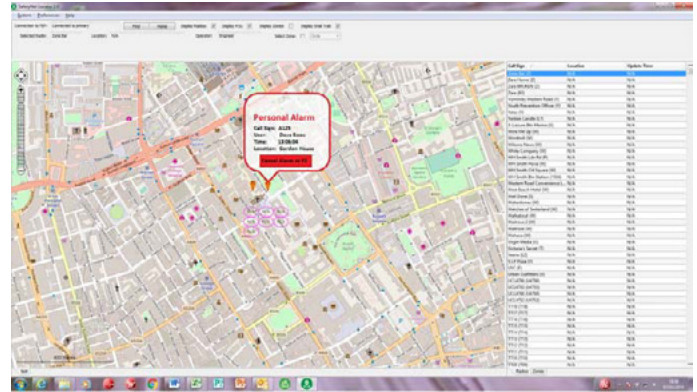
Data can be shared with other applications through a Cloud Server and SQL Server database to provide the necessary information to managers only when they need it.

UltraPRO Customised Dashboards

On a busy site or within a control room environment, staff have large amounts of data to process. A dashboard provides a concise summary of all activities so that at a glance any potential issue can be seen and dealt with quickly as it happens.

Full Service Provision and Support

PMR Products and its various sales partners can provide a complete package from initial survey and consultation through design, manufacturer, software applications development, installation and commissioning. PMR also provide a complete lifetime support package through onsite services and remote support. A fully managed service can also be made available with flexible finance options to fit in with your specific funding needs balancing CAPEX and annual spending needs.





SafetyNet™
PROTECT+

SafetyNet™

COMMUNICATE INNOVATE LOCATE

Evets House
Station Rd
Chepstow
NP16 5PB
United Kingdom

(+44) 01291 629 333
sales@pmr-products.com
pmr-products.com

209-165 2v0a

